



# **hyperMILL<sup>®</sup>**

MOLD&DIE Solutions

**Complete CAM Solution**  
for Efficient  
Blow Mold Machining

# More than 25 years of Experience

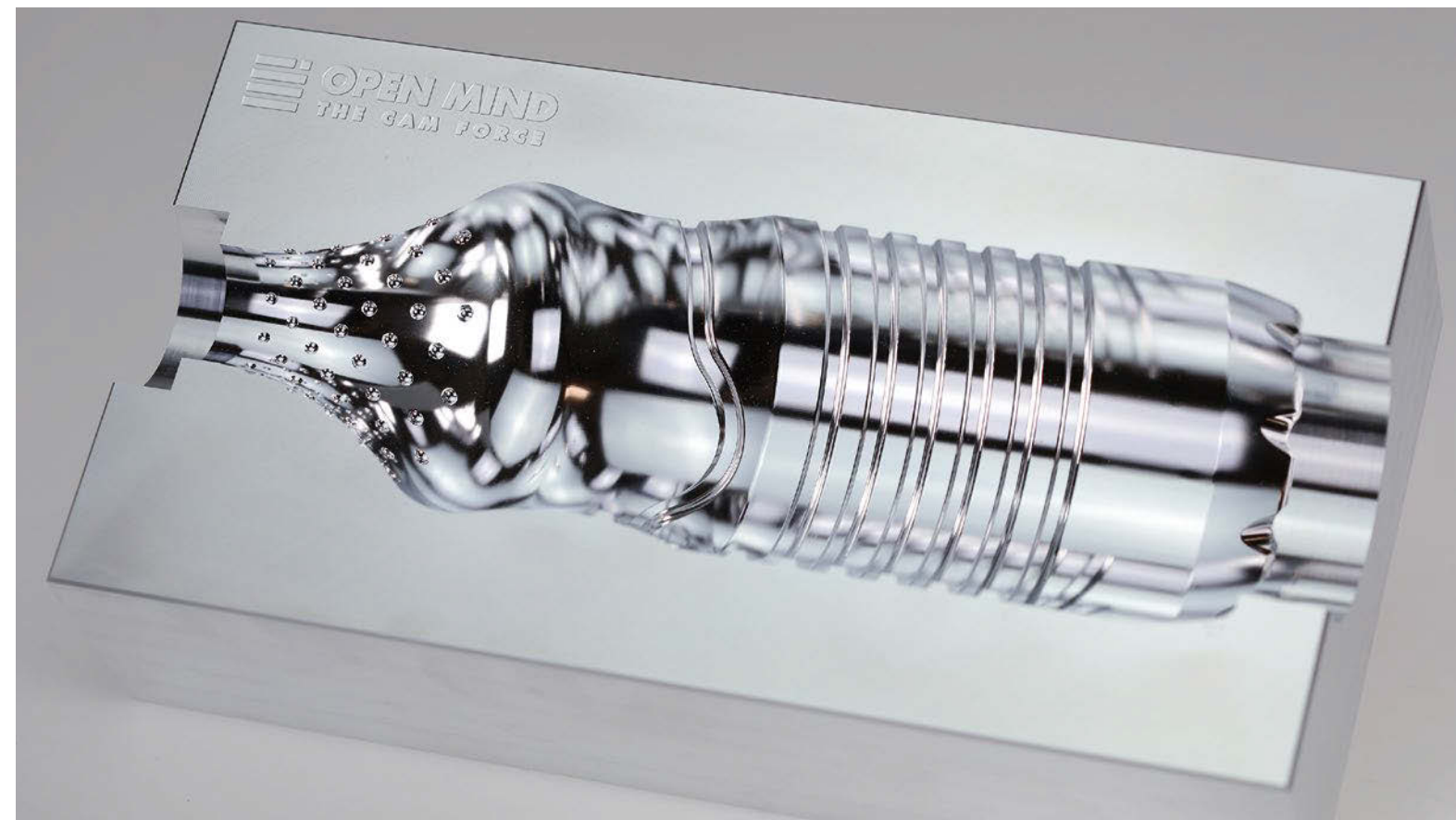
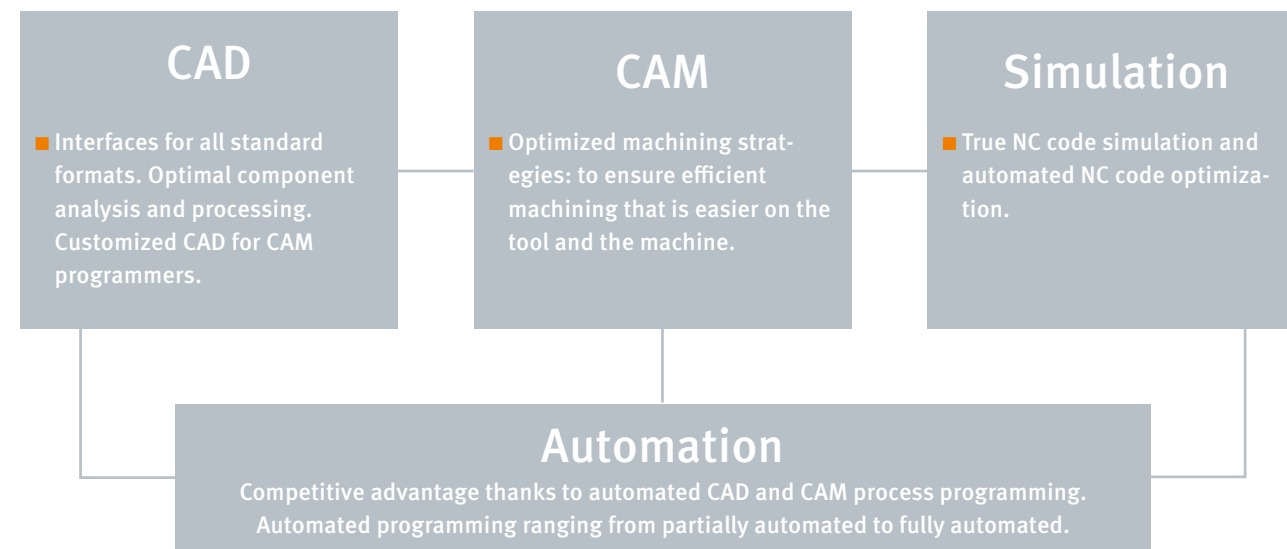
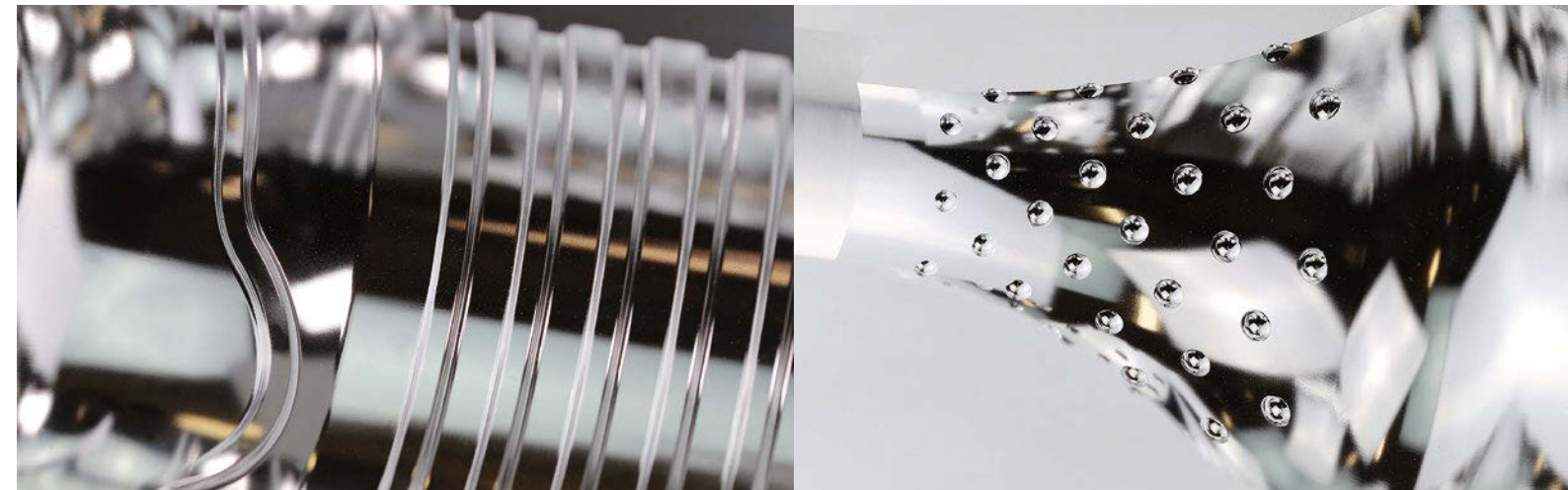
## in Tool and Mold Making

As a pioneer of 5-axis milling technology, we laid the foundations for reliable and efficient machining of components in tool and mold making more than 25 years ago. The innovative *hyperMILL*® CAM system has been setting standards ever since and also offers a complete solution for blow molders, which covers everything from the data import to NC code simulation and automation. *hyperMILL*® enables you to meet strict requirements, regardless of whether your products are destined for the food, beverage, pharmaceutical, or household goods industries. We also use a customer-oriented development process and work closely with machine tool and cutter manufacturers to ensure that *hyperMILL*® will continue to fulfill requirements in terms of quality and machining times, and can improve processes in the future, too.



“Our aim is to develop innovative and practical solutions for our customers entire process chains.”

Stefan Michel, Product Manager Tool and Mold Making  
OPEN MIND Technologies AG



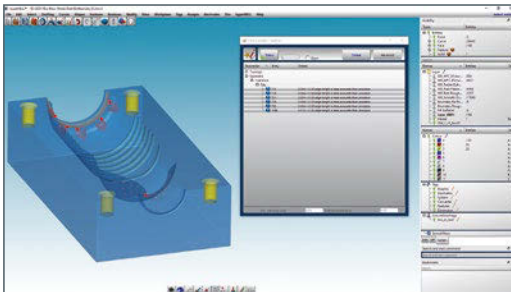


## Data import



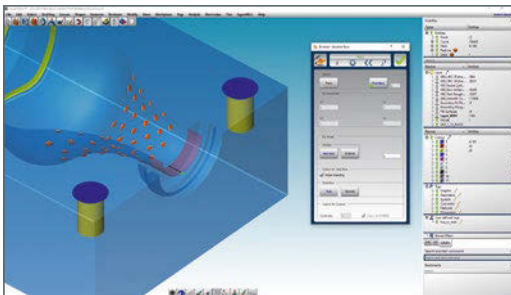
- Includes feature, model, and manufacturing information (PMI)

## Analysis



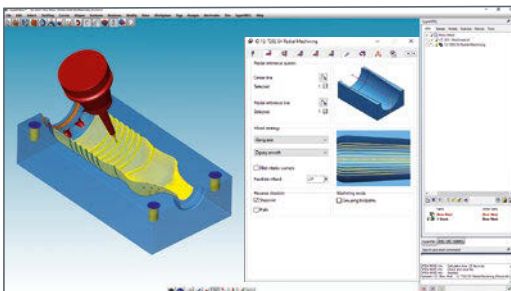
- Check the quality of faces/solids
- Find double entities
- Range of analysis functions: Draft angle, undercuts, radii, spherical face analysis, and so on

## Processing/repair



- Repair faults in surfaces or solids
- Convert faces/solids
- Set boundaries
- Close holes
- Create assistance elements: Surface extensions, curves, and so on

## Programming



- Tailor-made selection and filter functions
- Integrated CAD functions in *hyperMILL* machining jobs
- Set boundaries
- Extend faces

# hyperCAD<sup>®</sup>-S

## Powerful CAD platform

A modern CAD kernel developed in-house that provides the basis for our powerful CAD system. Interfaces for all standard as well as less-common formats enable third-party data to be imported easily, even with large 3D models and vast volumes of data.

## CAD for CAM

CAM programmers use CAD systems differently from most engineers. That's why we have developed *hyperCAD*<sup>®</sup>-S, a special CAD for CAM software program that is fully oriented to the requirements of CAM users.

To be more specific, specially developed functions simplify the daily tasks of CAM programmers. Once the data has been imported, analysis and repair functions make sure that it is of the quality needed to make programming successful. Tasks such as "Create support entities", "Close holes and drill holes," or even "Extend faces on the model" are quick and easy to execute with *hyperCAD*<sup>®</sup>-S. Customized filters, selection commands, and a clear visibility control make working intuitive and efficient.

Another highlight is that the user will also find CAD functions integrated directly into the CAM strategies, such as for extending faces automatically.

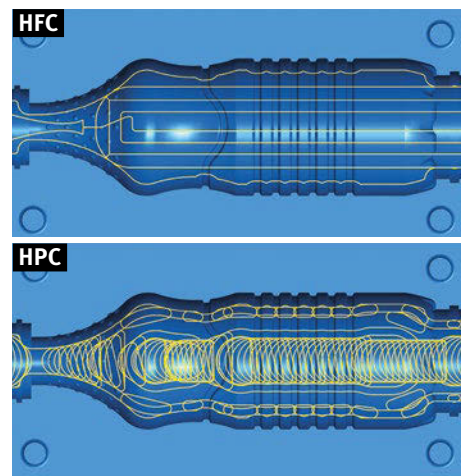
# Roughing

## Various roughing strategies

High-feed cutting (HFC) that boasts very high feedrates as well as high-performance cutting (HPC) with spiral and trochoidal tool movements are available for roughing blow molds. You can use the most efficient variant to rough the material as quickly as possible, depending on the shape of the blow mold.

### Features

- Highly efficient and proven strategies
- Calculation based on stock
- True-to-detail tool mapping



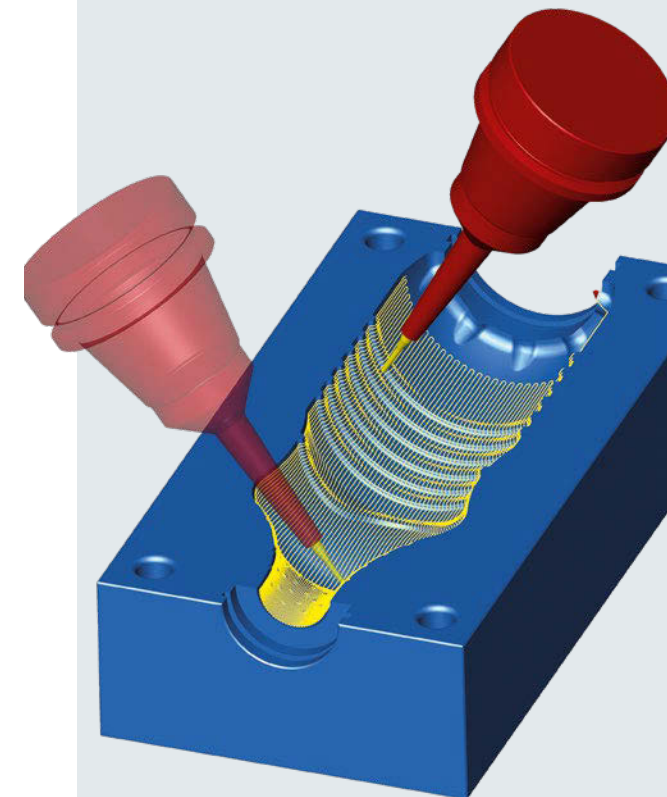
# Finishing

## High precision surface mode delivers perfect surfaces

hyperMILL® offers the “High precision surface mode” for finishing surfaces that have especially strict quality requirements. The toolpaths are calculated on the original surfaces, which means machining tolerances are also factored in down to the micrometer.

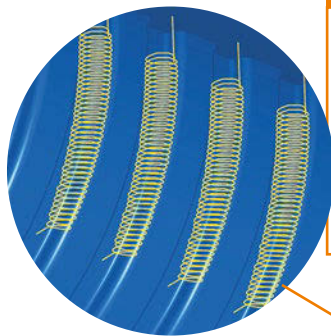
### Features

- Toolpath calculated directly on the CAD surfaces
- Excellent surfaces at the push of a button
- Facet-free surfaces



## Rest Stock Roughing

Highly dynamic and stock-based toolpaths ensure that residual stock is re-roughed effectively in the areas that could not be reached during the previous roughing job.

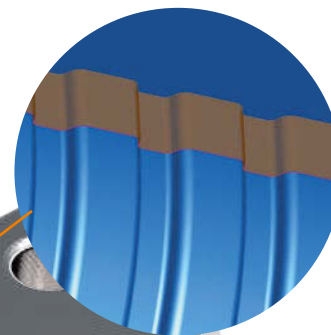


## Surface Extension

The “Automatic surface extension” function can be used during programming to extend the circumference of selected milling surfaces.

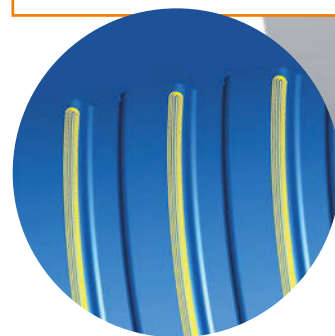
### Advantages

- Precise component edges for clean mold separation
- Automatic protection of adjacent surfaces
- Reduced CAD design work
- Fast and convenient programming



## Rest Stock Finishing

Proven strategies for finishing residual stock guarantee high-quality milling results. The machining processes are highly efficient and precise thanks to the optimized toolpaths that run parallel to the contour.



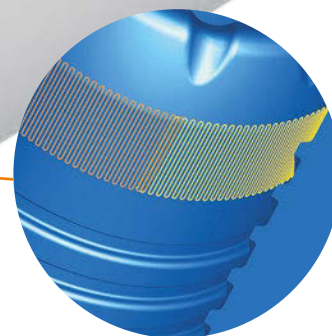
## Smooth Overlap

Transition areas are blended automatically to improve the quality of the surface:

- When machining with various strategies
- When machining with different tools
- When machining with a modified tool inclination

### Advantages

- No measurable transition
- No rework machining required



**hyperMILL®**  
MOLD&DIE Solutions

## 5-axis Radial Machining

### Specially developed CAM strategy

Thanks to a new radial projection method, the toolpaths are calculated very quickly, and the user can use various machining strategies to respond flexibly to the existing component conditions. The 5-axis inclination of the tool is controlled by simple tilt options in the strategy, regardless of whether 3+2 or 5-axis simultaneous machining is involved.

### Advantages

- Perfectly suited for blow molds
- High-quality surfaces thanks to the toolpaths being calculated on the CAD surfaces
- The 5-axis inclination is easy to control

# hyperMILL® VIRTUAL Machining

*hyperMILL® VIRTUAL Machining* allows you to simulate, analyze and optimize your manufacturing process. The perfect virtual rendering of the machine combined with NC code simulation enables process control at a level that has never been achieved before.

## Highly Efficient and Reliable: Simulation Based on NC Code

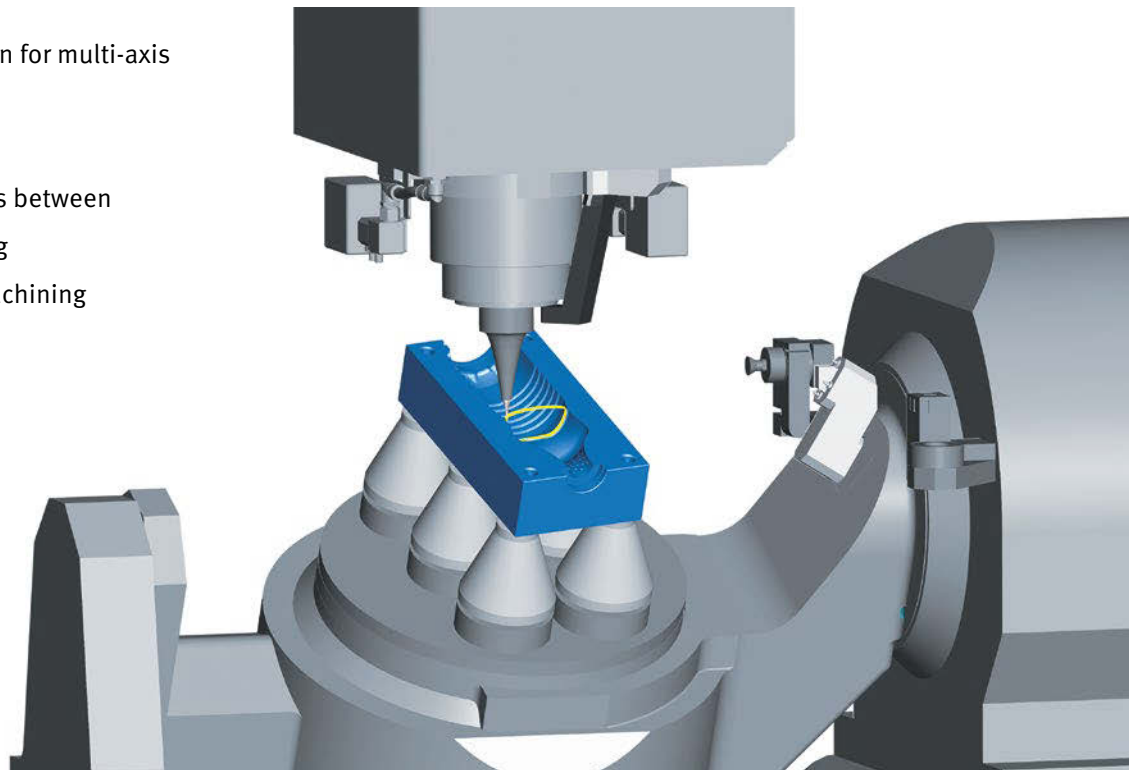
- Full simulation of all movements, including link movements
- Quick collision check that can be carried out independently of the simulation
- Bidirectional linking of NC block and *hyperMILL®* job enables the respective machining job to be allocated quickly
- Fast comparison of origins and tools with the actual machine configuration
- Display of axis limitations
- Comprehensive analysis functions

## Connected Machining

- Readout of zero-point definitions, tool data, and critical machine parameters from the controller, including comparison with the data stored in *hyperMILL®*
- Quick NC program transfer
- Remote operation of CNC machines
- Synchronization of the simulation with the machine's NC block

## NC Code Optimization

- Automatic solution selection for multi-axis machining
- Optimized movements
- Automatic connection paths between operations – smooth linking
- Kinematically optimized machining





- Headquarters** OPEN MIND Technologies AG  
Argelsrieder Feld 5 • 82234 Wessling • Germany  
Phone: +49 8153 933-500  
E-mail: Info.Europe@openmind-tech.com  
Support.Europe@openmind-tech.com
- UK** OPEN MIND Technologies UK Ltd.  
Units 3 • Bicester Business Centre  
Telford Road • Bicester • Oxfordshire OX26 4LD • UK  
Phone: +44 1869 290003  
E-mail: Info.UK@openmind-tech.com
- USA** OPEN MIND Technologies USA, Inc.  
1492 Highland Avenue, Unit 3 • Needham MA 02492 • USA  
Phone: +1 888 516-1232  
E-mail: Info.Americas@openmind-tech.com
- Brazil** OPEN MIND Tecnologia Brasil LTDA  
Av. Andromeda, 885 SL2021  
06473-000 • Alphaville Empresarial  
Barueri • Sao Paulo • Brasil  
Phone: +55 11 2424 8580  
E-mail: Info.Brazil@openmind-tech.com
- Asia Pacific** OPEN MIND Technologies Asia Pacific Pte. Ltd.  
3791, Jalan Bukit Merah • #04-08  
Singapore 159471 • Singapore  
Phone: +65 6742 95-56  
E-mail: Info.Asia@openmind-tech.com
- China** OPEN MIND Technologies China Co. Ltd.  
Suite 1608 • Zhong Rong International Plaza  
No. 1088 South Pudong Road  
Shanghai 200120 • China  
Phone: +86 21 588765-72  
E-mail: Info.China@openmind-tech.com
- India** OPEN MIND CAD/CAM Technologies India Pvt. Ltd.  
#369/4, 1<sup>st</sup> Floor • 2<sup>nd</sup> Cross • 1<sup>st</sup> 'B' Main Road  
7<sup>th</sup> Block, Jayanagar (W) Bangalore – 560070  
Karnataka • India  
Phone: +91 80 2676 6999  
E-mail: Info.India@openmind-tech.com
- Japan** OPEN MIND Technologies Japan K.K.  
Albergo Musashino B101, 3-2-1 Nishikubo  
Musashino-shi • Tokyo 180-0013 • Japan  
Telephone: +81-50-5370-1018  
E-mail: info.jp@openmind-tech.co.jp
- Taiwan** OPEN MIND Technologies Taiwan Inc.  
Rm. F, 4F., No.1, Yuandong Rd., Banqiao Dist.  
New Taipei City 22063 • Taiwan  
Phone: +886 2 2957-6898  
E-mail: Info.Taiwan@openmind-tech.com

OPEN MIND Technologies AG is represented worldwide with own subsidiaries and through competent partners and is a member of the Mensch und Maschine technology group, [www.mum.de](http://www.mum.de)



We push machining to the limit

[www.openmind-tech.com](http://www.openmind-tech.com)